

Flat Top Deck Cargo & Ballast Tank Barge



GENERAL PARTICULARS

Flag	:	Singapore
Class	:	ABS
Year Built	:	2013
Notation	:	✠ A1, Barge
Harbourcraft Licens	:	SC 4625Z

PRINCIPAL DIMENSIONS

Length Moulded	:	230 ft (70.10m)
Breadth Moulded	:	64 ft (19.50m)
Depth Moulded	:	14 ft (4.27m)
Design Draft	:	2.86m
GRT / NRT	:	1,475 / 442
Deck Strength	:	15 Tons/m ²
Deadweight	:	Approx. 3,262.5 Tons
No. of Compartments	:	21 Watertight Compartments
No. of Bulkheads	:	2 Longitudinal & 7 Transverse

DECK EQUIPMENT

Anchor	:	1 x 1,290kg stockless anchor
Anchor Winch	:	1 set of 10 Tons capacity diesel-driven winch c/w one length of 25mm dia X 150m of steel wire rope
Towing Brackets	:	2 Smit type towing pads at bow and aft of the barge
Navigation Light Stands	:	3 units
Stanchions	:	16 port / 16 starboard
Width between Stanchions	:	TBA

SCANTLING

Deck Plating	:	16mm
Bottom Plating	:	12mm
Side Shell Plating	:	12mm

Specifications are believed to be correct but not guaranteed. Updated on 12th September 2019

Page 1 of 2

Tiong Woon Offshore Pte. Ltd.

Co. Reg. No. 200304922M

No 15 Pandan Crescent, Singapore 128470

Tel: (65) 62617888 Fax: (65) 6777 4544

Tiong Woon Corporation Holding Ltd

(Group Head Office)

Co. Reg. No. 199705837C

No 15 Pandan Crescent, Singapore 128470

Tel: (65) 6261 7888 Fax: (65) 6777 4544

Crane & Transport Booking Hotline: (65) 6777 8882

Email: enquiry@tiongwoon.com

Webpage: www.tiongwoon.com



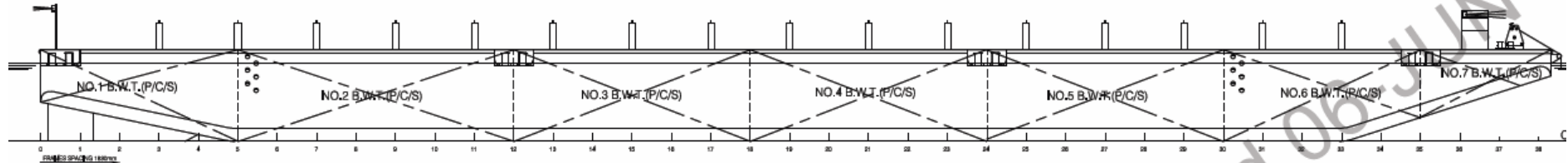


TIONG WOON OFFSHORE PTE. LTD.

-A member of Tiong Woon Corporation Holding Ltd-

TWM 53-230

Flat Top Deck Cargo & Ballast Tank Barge



DECK VIEW

